

ATIKA 24H



TESTED FOR 24-HOUR USE

BACKREST ADJUSTABLE IN HEIGHT

MADE IN THE EUROPEAN UNION

BS 5459-2 2000

The Atika 24H represents the impulse, renewal, and adaptation to the demands of new corporate environments: lighter, more efficient, more productive, better. The Atika 24H is high-tech: synchronised auto-weighting movement controls the tension for each user, with the possibility of locking with anti-shock, ergonomic arms in the 2D and 4D options. You have three options for the backrest: high-strength technical mesh, polyamide injection soft touch fabric, and foam filled. The Atika 24H is an improvement in performance and ergonomics, bringing together all of the components and materials tested for 24 hour use and for users weighing up to 150 kg.



3 page
Swivel chair



5 page Dimensions

6 page Sustainable Atika 24H

7 page Ergonomics

8 page Finishes

9 page Instructions for use / Arms

12 page Instructions for use / Mechanisms

14 page Instructions for use / Wheels

15 page Assembly instructions

16 page Certificates, maintenance, cleaning and warranty

01.

Backrest

Height adjustable with black or chrome steel blades from 12 to 15 microns thick, depending on the base.

Backrest structure in black injected nylon, reinforced with 30% fiber. Backrest in high resistance technical mesh.

Lumbar adjustment by adjusting the height of the backrest.



02.

Seat

Interior in beech plywood (MQ cert. 07-175), covered with fireproof foam (UNE EN 1021-2/06 / BS-5852/06) of high density expanded polyurethane 60 kg/m³ (EN ISO 845).

03.

Self-weighting synchro-displacement mechanism / synchro (BS 5459 part 2/00 A.5.5 / ANSI BIFMA x5.1-2011/5/6/10)

The synchro mechanism allows the seat and backrest to tilt synchronously with the central axis of the chair, but independently for models that are not monocoque. Thus, it is possible to adjust the degree of inclination of the backrest and seat.

The sliding system also has 5 different positions to adapt the depth of the sitting position and a translation of 6 cm.

Characteristics of this system are the following:

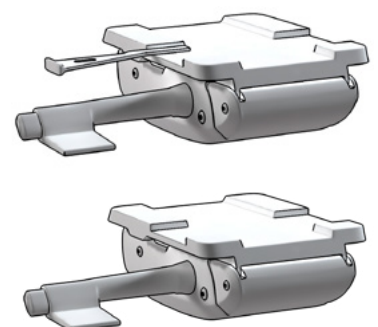
- Up to 20° of backrest inclination, with 5 locking positions by button.
- Up to 6° of seat inclination, which is the working position 0°.
- Self-weighting function from 65 to 150 kg.



04.

Gas lift, bases and wheels

- Elevation using a class 4 gas lift, tested for users weighing up to 150 kg, black or chromed 12 to 15 microns thick, depending on the base.
- Polished aluminum base 70 cm diameter (ANSI-BIFMA X5.1-2011/7). Comes with chromed gas lift (UNI 9084/02).
- Black nylon base of 68 cm diameter. Comes with a black gas lift (UNI 9084/02).
- Double Emilsider wheels of 65 mm diameter, with soft rubber-reinforced copolymer tyre tread and hollow design, and reinforced copolymer structure, tested for 24 hours use (EN 12529 / BIFMA X 5.1). Central black structure and grey tyre tread. With an adjustable safety braking system (EN 12529) that applies a slight brake when the user stands up from the seat in order to prevent any movement of the chair when not in use. It has a screw at the bottom to adjust the braking force or deactivation of the braking system. The base connection bolt has a circular nylon ring to prevent noise when used on metal or aluminum bases.



01.

Backrest

Highly resistant technical mesh backrest whose characteristics are:

Thickness: 1.15 mm.

Weight of the fabric (UNI 9213/3): 560 gr/m²

Density of warp threads (UNI 1049/2): 6.1 threads/cm.

Density of weft threads (UNI 1049/2): 5.3 threads/cm.

Warp breaking load (UNI EN ISO 1421): 310 kg/cm.

Weft breaking load (UNI EN ISO 1421): 270 kg/cm.

Elongation at break in warp (UNI EN ISO 1421): 21%.

Elongation at break in weft (UNI EN ISO 1421): 15%.

Fatigue resistance: EN 1728/00 / EN 15373/07

Light resistance: EN ISO 4892-2/06.

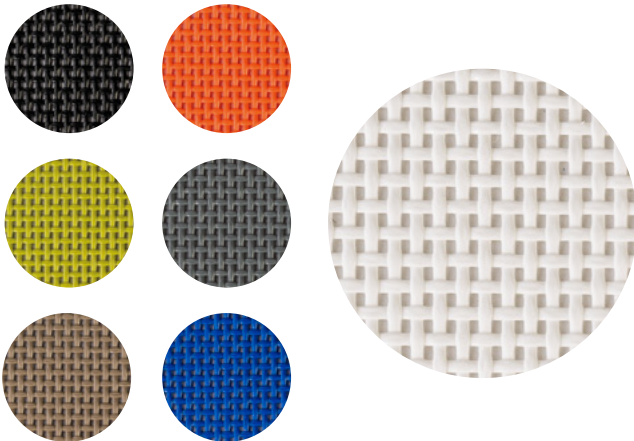
Color resistance to rubbing: EN ISO 105-x12/03.

Abrasion resistance: EN ISO 12947-2/98.

Composition:

70% PVC

30% Polyester

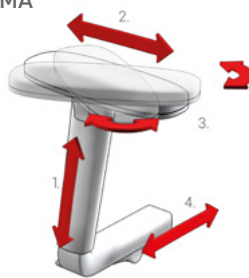


02.

Armrests (optional)

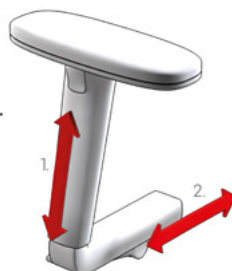
-BR09 (Only with self-weighting mechanism) (ANSI BIFMA X5.1-2011/13/14/21): 4D, black polypropylene injection, 100% recyclable. Optional fireproof treatment (UNE 23727/90 / UNE 23721/90 / UNE 23724). Polyurethane armrests.

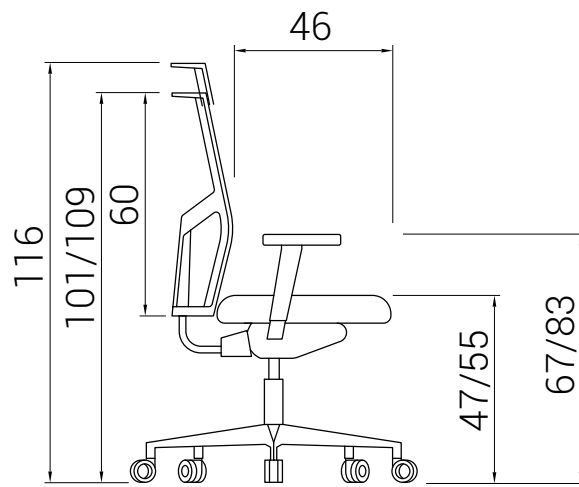
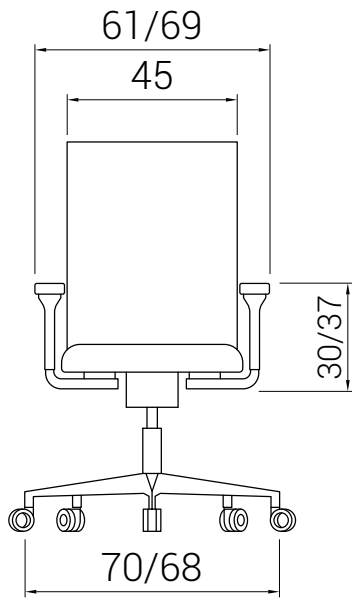
1. Height adjustment 10 cm, with 10 locking positions.
2. Armrest depth adjustment, 2.5 cm in each direction.
3. Rotation of the armrest, maximum 30° in each direction.
4. Adjustment of the width between the armrests, up to 5 cm on each side.



-BR10 (Only with self-weighting mechanism) (ANSI BIFMA X5.1-2011/13/14/21): 2D, injection molded black polypropylene, 100% recyclable. Optional fireproof treatment (UNE 23727/90 / UNE 23721/90 / UNE 23724). Polyurethane armrests.

1. Height adjustment 10 cm, with 10 locking positions.
2. Width adjustment between armrests, up to 5 cm on each side.





ATIKA 24H SUSTAINABLE



95%
RECYCLABLE

62% Metal
17% Other plastic materials
6% Wood
15% Others

BS
5459-2
2000

BACKREST
Black injected nylon.
High resistance technical mesh.

SEAT
Interior in beech plywood covered with foam polyurethane

MECHANISM
in steel.

BASE
in polished aluminium or black nylon.

WHEELS
double soft rubber-reinforced copolymer tyre tread and hollow design, and reinforced copolymer structure

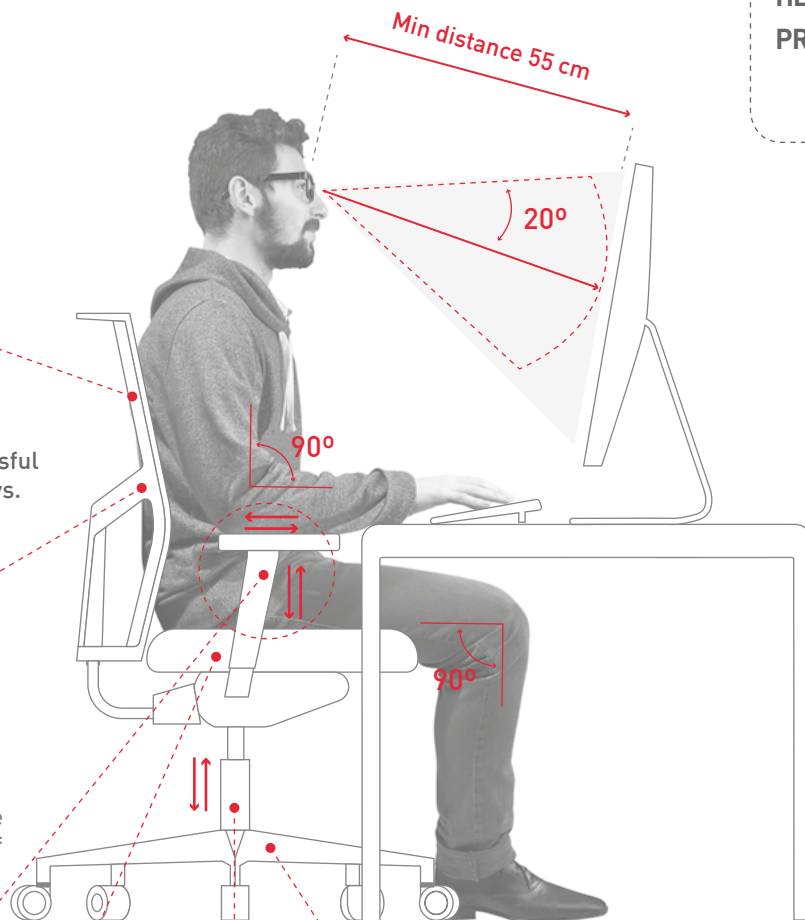
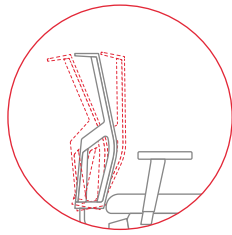


- ✓ 100% recyclable cardboard packaging, made from 94% recycled materials.
- ✓ Dileoffice is certified according to ISO 9001:2015, 14001:2015 and 14006:2011. All phases of the production process, from the receipt of components to the delivery of the finished product, are meticulously managed to minimise the impact on the environment.
- ✓ Dileoffice chairs are assessed by AIDIMEE to certify the compliance of each product with UNE EN standards.
- ✓ If it is necessary to replace the entire chair or any of its parts, the end customer will be informed of the recycling management of each element according to the composition of the materials.
- ✓ Transport is carried out by scheduled routes, giving priority to fuel savings. We use our own transport trucks, always trying to use the maximum volume, and minimising the volume in the packaging.

DILE ERGONOMICS



GOOD POSTURE IS ESSENTIAL TO AVOID HEALTH PROBLEMS



01.
THE INCLINATION OF THE SEAT AND THE BACKREST
 A synchronized movement of the seat and backrest, configure a very successful solution for long working or study days.

02.
LUMBAR ADJUSTMENT
 The backrest must provide good support for the entire back and be adapted to the lumbar part. The lumbar adjustment mechanism allows the curvature of the chair to be adjusted according to the curvature of the user's back for better support.

03.
ADJUSTABLE ARMRESTS
 The forearms should be parallel to the work surface and form a right angle with the arm.

04.
THE STRENGTH OF THE SEAT
 The seat must offer firmness and adaptation to the user's physiognomy.

05.
CHAIR HEIGHT ADJUSTMENT
 The possibility of adjusting the height allows for the correct posture, with the feet comfortably resting on the floor and the legs in a horizontal position.

07.
FABRIC
 Depending on the area of use and climate, one fabric or another should be chosen.

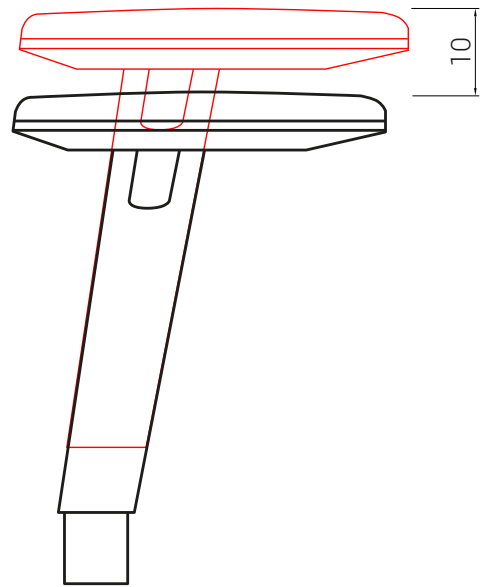
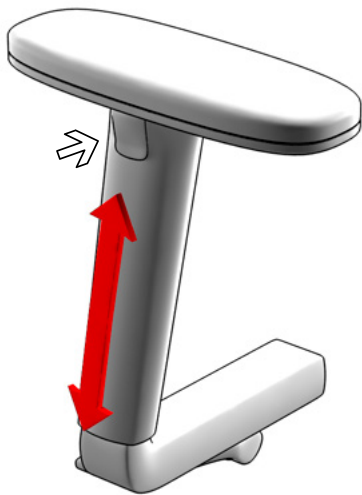
06.
BASES
 The base of the chair should have 5 points of support for the wheels on the ground, to facilitate their movement with minimal effort.

“Don't forget to take a break to stretch and move around regularly”

01 BALI (G01)									
	P6	P8	P20	P21	P22	P28	P29	P30	
02 POLYESTER (G01)									
	C1	C2	C5	C7	C8	C10	C14	C17	
03 GOYA (G01)									
	D1	D3	D6	D8	D9	D10	D11	D12	
04 TOUCH LEATHER (G01)									
	R1	R2	R3	R4	R5	R6	R7	R8	R9
05 COMBI (G01)									
	B1	B2	B3	B4	B5	B6	B7	B8	
06 OCEAN (G02)									
	G2	G3	G4	G5	G7	G8	G10	G12	
07 ELASTIKA FR (G02)									
	I2	I3	I4	I7	I10	I11	I12	I14	
08 ORUGA (G02)									
	O2	O4	O9	O10	O11	O12	O15		
09 NILO (G02)									
	NL1	NL7	NL9	NL12	NL15	NL33	NL39	NL43	
10 MADISON (G02)									
	MA1	MA3	MA4	MA6	MA12	MA17	MA19	MA20	
11 TONAL (G02)									
	T01	T02	T03	T04	T05	T06	T07	T08	
12 VALENCIA (G03)									
	VA5	VA6	VA11	VA14	VA15	VA16	VA21	VA22	
13 DEKORA (G03)									
	DE1	DE2	DE3	DE4	DE5	DE6	DE7	DE8	
14 ATIKA MESH									
	01	02	06	20	22	26	27		

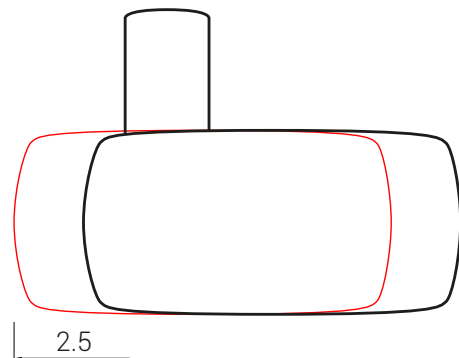
1. Arms

BR09



HEIGHT ADJUSTMENT

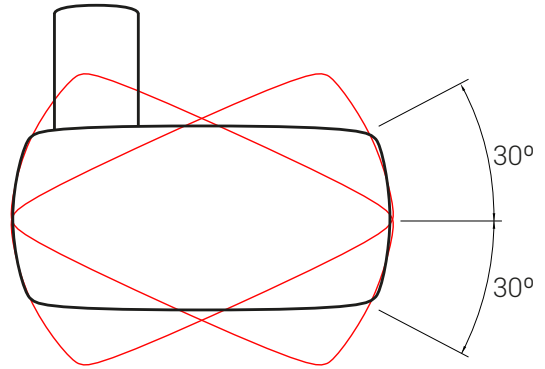
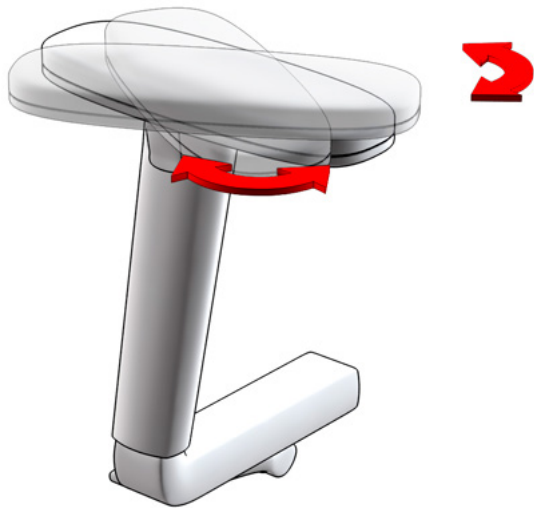
Press the arm button (arrow) and without releasing it, adjust the height of the arm. Once in the desired position, release the button.



ADJUSTING THE DEPTH OF THE ARMREST

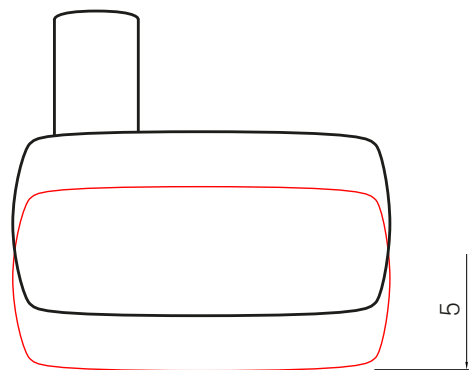
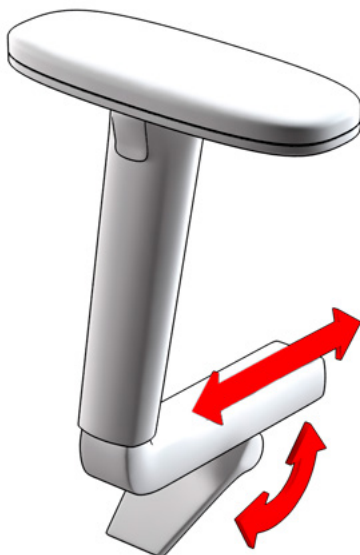
By pressing the armrest firmly, we push it forward or backward to move it to the desired position. It moves 2.5 cm in each direction.

BR09



ARMREST ROTATION

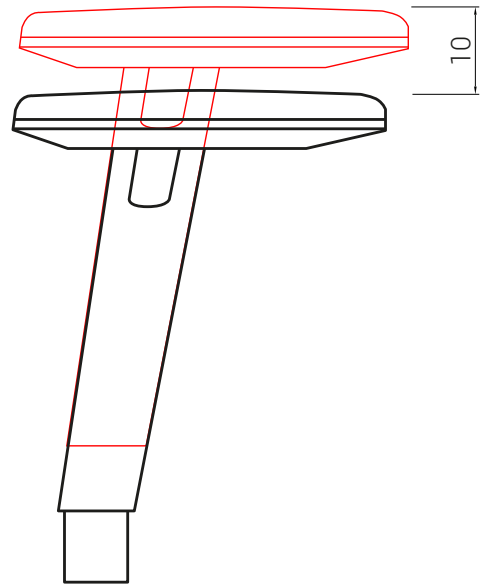
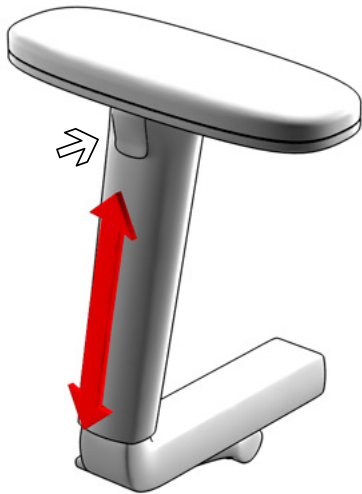
Pressing the armrest firmly, we make force by turning the armrest inwards or outwards, until it is in the desired position.



ARM WIDTH ADJUSTMENT

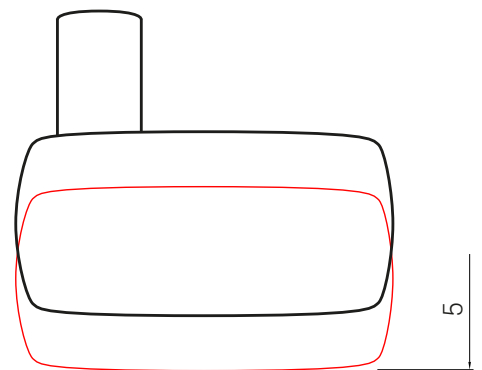
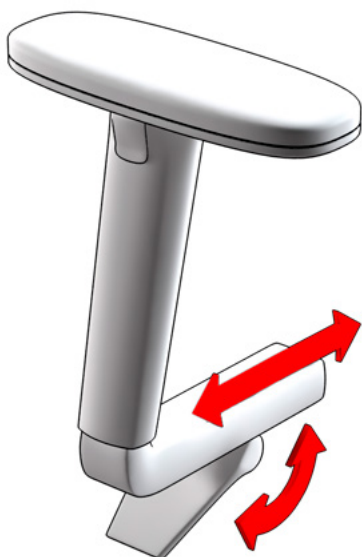
We move down the handle at the bottom of the arm. We move the arm to the desired position. Finally, we move up the handle.

BR10



HEIGHT ADJUSTMENT

Press the arm button (arrow) and without releasing it, adjust the height of the arm. Once in the desired position, release the button.

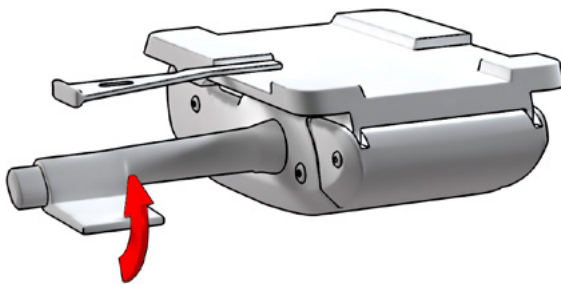


ARM WIDTH ADJUSTMENT

We move down the handle at the bottom of the arm. We move the arm to the desired position. Finally, we move up the handle.

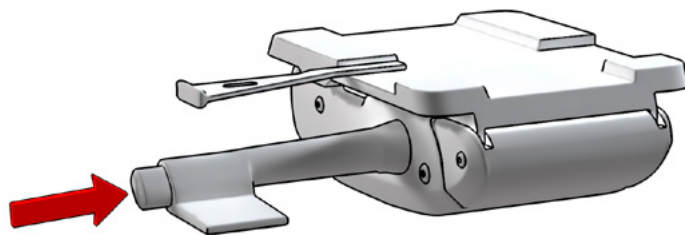
2. Mechanism

SYNCHRO-SLIDE MECHANISM



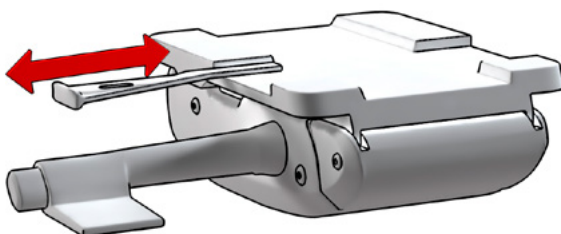
GAS LIFT

By lifting the handle we unlock the gas column. Without weight the chair lifts up. With the user seated, the chair goes down. Once the handle is released, the gas column is blocked again.



ADJUSTMENT FOR SEAT/BACKREST INCLINATION (SYNCHRO)

At the end of the gas lift handle there is a button. By pressing it, we release the synchro device, which allows, with the user seated, to modify the angle of the seat and backrest inclination in a synchronized way. By releasing the button, the seat and backrest are fixed in the desired position. To unlock it, press the button and use your back to exert weight.

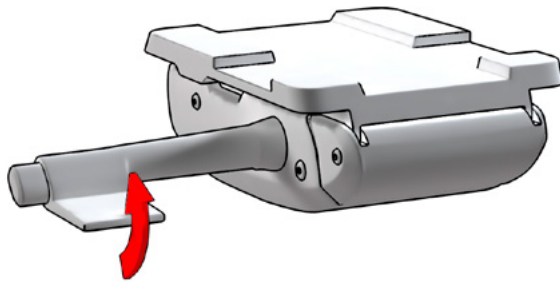


ADJUSTING THE SLIDING OF THE SEAT (TRASLA)

Pressing the handle releases the seat slider. Once moved to the desired position, we pull out leaving the handle in the initial position, and fixing the position of the seat.

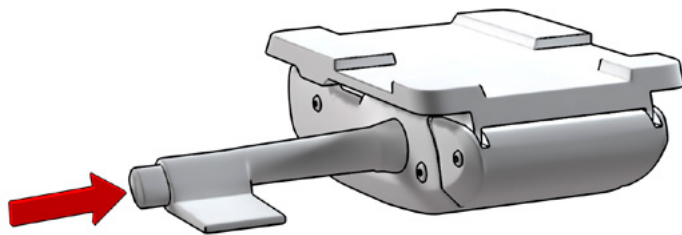
IMPORTANT: Do not move the handle forward or backward, damage may be caused.

SYNCHRO MECHANISM



GAS LIFT

By lifting the handle we unlock the gas column. Without weight the chair lifts up. With the user seated, the chair goes down. Once the handle is released, the gas column is blocked again.



ADJUSTMENT FOR SEAT/BACKREST INCLINATION (SYNCHRO)

At the end of the gas lift handle there is a button. By pressing it, we release the synchro device, which allows, with the user seated, to modify the angle of the seat and backrest inclination in a synchronized way. By releasing the button, the seat and backrest are fixed in the desired position. To unlock it, press the button and use your back to exert weight.

3. Wheels

HOLLOW SELF-BRAKING WHEELS

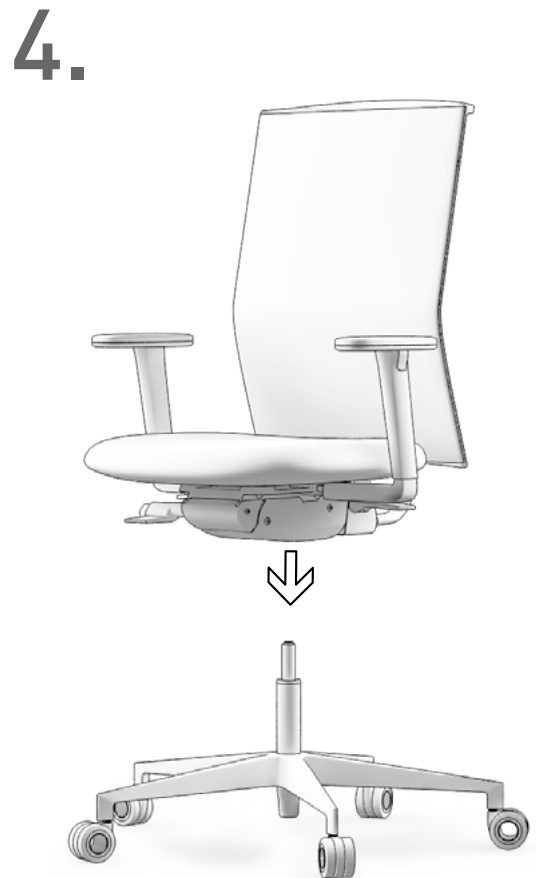
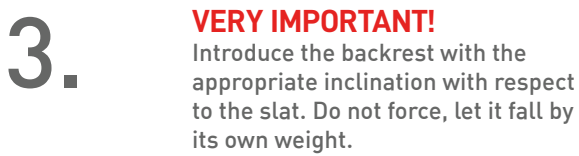
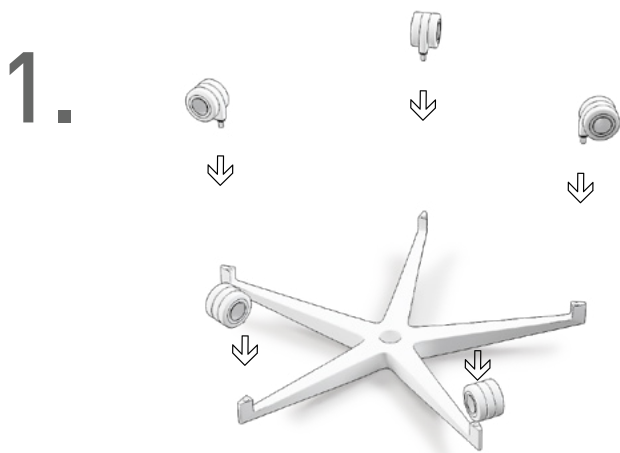
Adjustable safety braking system that applies a slight brake when the user stands up from the seat in order to prevent any movement of the chair when not in use. It has a screw at the bottom to adjust the braking force or deactivation of the braking system.



Adjustable safety braking system that applies a slight brake when the user stands up from the seat in order to prevent any movement of the chair when not in use. When the user is seated, the wheel can rotate freely and the chair can be moved. When the chair has no user, without weight, the wheel exerts a resistance to movement. It is equipped with a screw located in the lower part, which allows you to adjust the braking force or deactivate the brakes.



Using a cross-headed screwdriver, and turning the screw clockwise, the wheel is released. Whether the user is seated or not, the wheel rotates freely and the chair can be moved.



CERTIFICATES

DILE has ISO 9001 quality certificates, which establish the requirements that a company must fulfil in order to implement an adequate quality management system in its production system, ISO 14001, which implies a commitment to and sustainable management with the environment, and ISO 14006, which is a certifiable guarantee that an organisation identifies, controls and minimises the environmental impact of its products and/or services in all phases of its life cycle, including the project and design phase.

Aidimme is the Technological Institute for the processing of metals, furniture, wood, packaging and related products. It is Aidimme that tests our chairs and issues certificates accrediting their ergonomics, durability and resistance.

Atika 24H has the BS 5459-2:2000 + A2:2008 certificate.

FAMO is the Association of Manufacturers of Furniture and General Equipment for Offices and Communities. Since 1986, it has represented and defended the interests of companies in the office and community furniture sector, promoting their image and presence in international markets. DILE has been a member of the FAMO since 2008.



MAINTENANCE AND CLEANING

01. FABRIC

Articles upholstered with these fabrics (BALI, POLIESTER, GOYA, COMBI, MADISON, OCEAN, ELASTIKA FR, ORUGA, TONAL AND DEKORA):

- Frequent vacuuming or dry cleaning.
- Normal cleaning with a cloth slightly humidified with warm water and if the stain requires it, add a little neutral soap (ph 5.5), rinse and leave to dry in open air (avoid the sun).
- Do not use bleaching agents, abrasive products, cleaning waxes or ordinary domestic cleaning sprays.

Articles upholstered in touch leather or synthetic material. (TOUCH LEATHER, NILO AND VALENCIA):

- Normal cleaning with a microfibre cloth, slightly humidified with warm water and then dry with a dry cloth.
- Stains should be treated as soon as possible to prevent them from penetrating.
- For aggressive stains, such as pen marks, use a cloth humidified in a solution of water and diluted alcohol.
- Do not use abrasive products, cleaning waxes or cleaning sprays that are normally used in daily domestic use.
- Do not apply bitumen or chemicals.
- Never apply dry foam or scrape and/or scrub vigorously.
- Avoid exposure to heat sources.

Articles upholstered in leather:

- Clean carefully (without rubbing) with a simple cloth if possible made of microfibre humidified with water.
- If the stain is more important, add a little neutral soap (ph 5.5), rinse and leave to dry in the open air.
- For aggressive stains, such as pen marks, use a cloth humidified in a solution of water and diluted alcohol.
- Do not use abrasive products, cleaning waxes or cleaning sprays that are normally used in daily domestic use.
- Do not apply bitumen or chemicals.
- Never apply dry foam or scrape and/or scrub vigorously.
- Avoid exposure to heat sources.

02. PLASTIC AND WOODEN PARTS

- Normal cleaning with a cloth slightly humidified with warm water and a little neutral soap (ph 5.5), rinse and dry with a dry cloth.

03. METAL PARTS

- Normal cleaning with a cloth slightly humidified with warm water and a little neutral soap (ph 5.5), rinse and dry with a dry cloth.
- Polished aluminium parts can be polished with a dry cotton cloth to restore their original shine.

04. END OF LIFE PACKAGINGS



All packaging materials used can be disposed of without danger to the environment. The cardboard box can be broken or cut into smaller pieces, and the packing bag is made of polyethylene. All these packaging materials can be taken to a waste collection center or deposited at a recycling station. Dispose of transport packaging in the most environmentally friendly way possible. Returning packaging materials to the material cycle saves raw materials and reduces waste production.

PRODUCT

All Dileoffice products have a high degree of recyclability at the end of their life. After separation of their components, the majority of them can be dismantled, this facilitates the separation of the different materials. It is recommended to deliver them to a recycling center for proper separation and processing, thus contributing to the environment.

WARRANTY

The guarantee period is 3 years from the invoice date, during which time DILE undertakes to replace defective or broken parts. DILE will not be responsible for

the improper use of our products and no guarantee will be given for deterioration due to incorrect use and/or for the use of products that are not recommended for

maintenance. It is possible to extend the guarantee for specific projects/products by contacting the sales department.