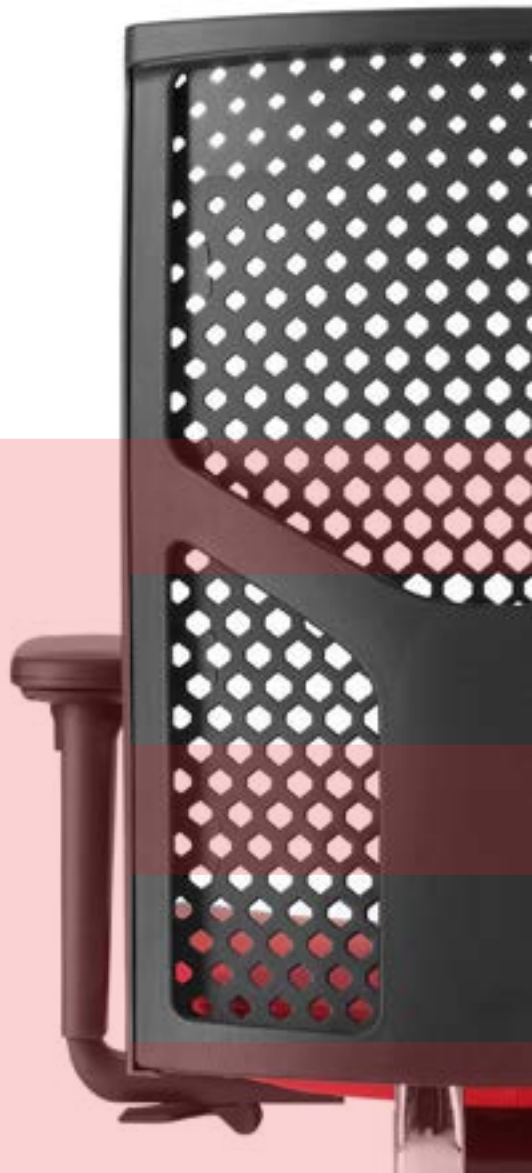
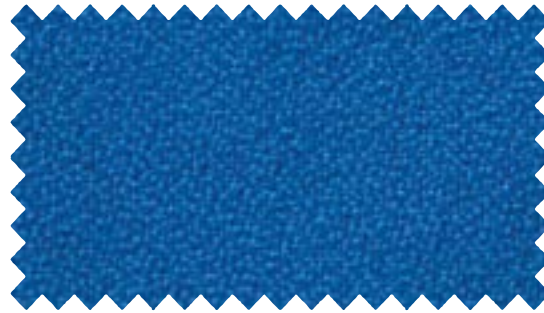




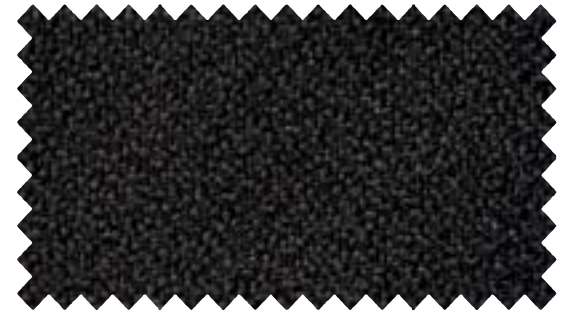
Atika



Upholstered Group 01 Bali



P6



P8

Tech data sheet

Technical data sheet

Composition 100% Polyolefin

Width 140 cm/ 54 in \pm 2%

Resistance to abrasion UNE-EN
14465:2004+A1:2007

Annex A to based on UNE-EN ISO 12947-2:1999/
AC:2006

+ 90.000 (Martindale cycles)

Breaking strenght UNE-EN ISO 13937-3:2001

Warp: 180 N / Weft: 160 N

Fastness to Rubbing

Dry: UNE-EN ISO 105-X12:2003 4/5

Wet: UNE-EN ISO 105-X12:2003 4/5

Coulour fastness to light

UNE-EN ISO 105-B02:2001 +A1:2002 Method 2
6/7 (grade 1-8; 8 best value) Suitable for outdoor

Pilling resistance

UNE-EN 14465:2004 +A1:2007, UNE-EN ISO
12945-2:2001 4/5

Inflammability:

UK: BS 5825:2006 (cigarette)

UE: in 1021-1:2006 (cigarette)

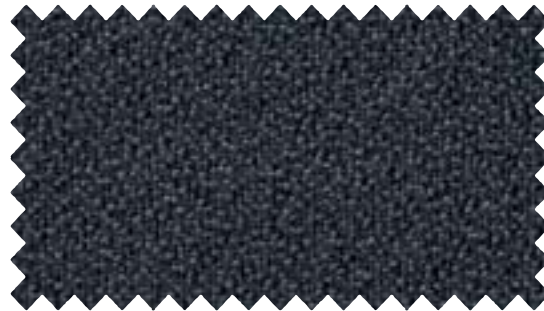
D: DIN 66084:2003-07 classification P- c

USA: CAL TB 117:2000 Section E, part 1
(C.S. 191-53; CLASS 1)

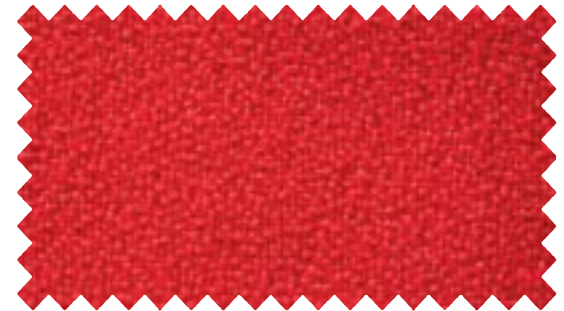
NFPA 260:2009 Cover fabric CLASS 1

Buses: UNECE Regulation No. 118 Annex 6

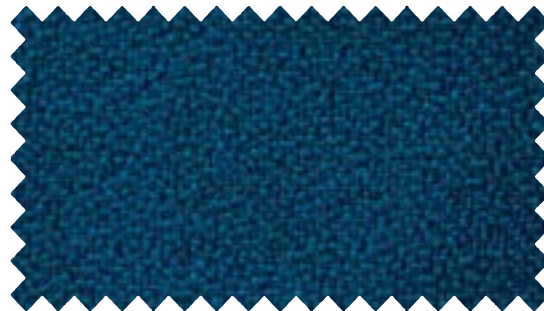
(Directive 95/28 Annex IV) Flammability perfor-
mance is dependent on foam used.



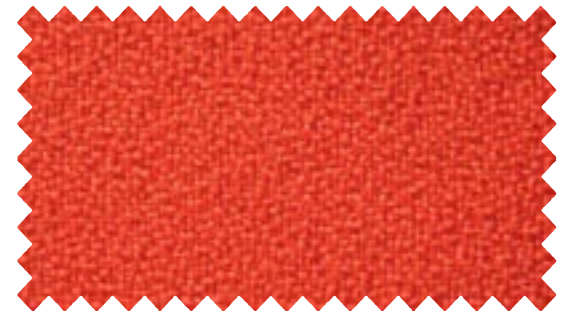
P20



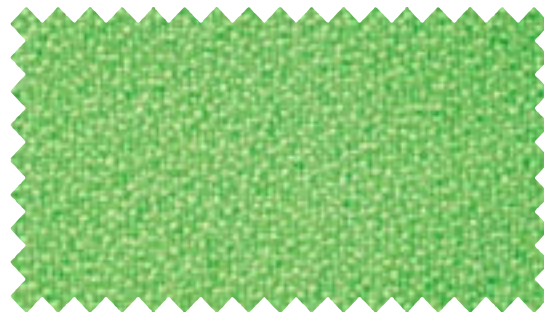
P21



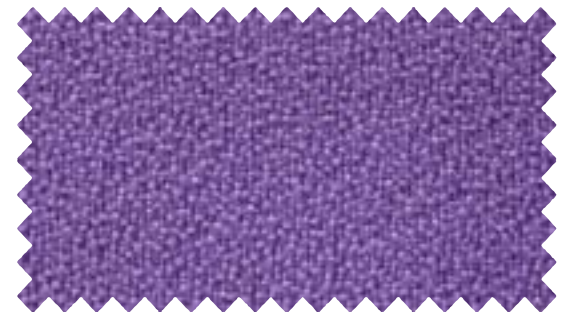
P22



P28



P29



P30



Cigarette test



Don't use
bleach



Wash in dry



Antibacterial



Ecologic



Antistatic



Reciclable
100%



Suitable for
outdoor



Upholstered Group 01 Polyester



C1



C2



C5



C7



C8



C10



C14



C17

Tech data sheet

Composition 64% polyester – 36% pur

Width 140 cm/ 54 in \pm 2%

Resistance to Abrasion + 80.000
(Martindale cycles) ISO 12947-2

Breaking strenght UNE-EN ISO 13937-
3:2001 Warp: 400 N / Weft: 260 N

Fastness to Rubbing Dry: UNE-EN ISO
105-X12:2003 4/5

Wet: UNE-EN ISO 105-X12:2003 4/5

Coulour fastness to light Value: 6
(Tolerance 5 to 8; 8 best value)

ISO 105-B02 (Xenotest)

Pilling resistance UNE-EN ISO 12945-
2:2001 4/5

Inflammability: in 1021-1 & 2

Will also pass other flammability
standards. Flame retardant performance
is dependent upon the foam used.



Don't use
bleach



Wash in dry



Avoid drying
in the sun



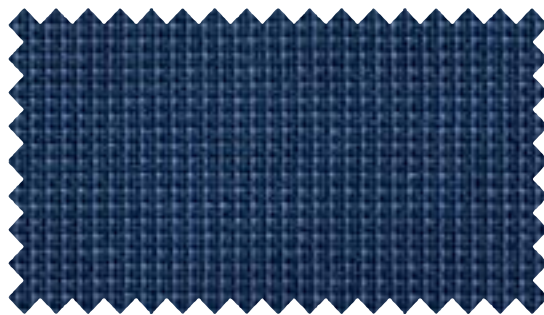
Cigarette test



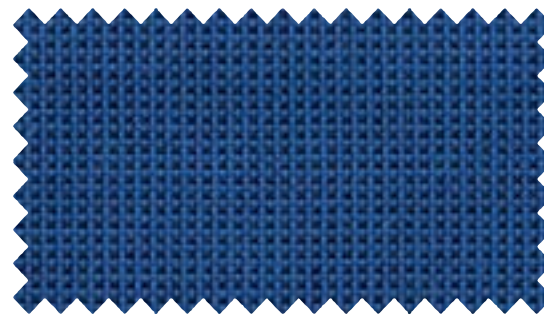
Match test



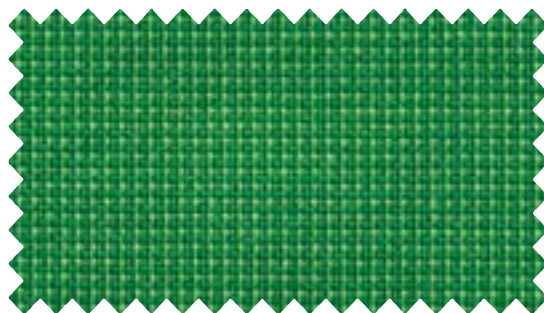
Upholstered Group 01 Goya



D1



D3



D6



D8

Tech data sheet

Composition 100% Polyolefin

Width 140 cm/ 54 in \pm 2%

Resistance to abrasion UNE-EN
14465:2004+A1:2007

Annex A to based on UNE-EN ISO 12947-
2:1999/AC:2006 90.000 (Martindale
cycles)

Breaking strenght UNE-EN ISO 13937-
3:2001

Warp: 130 N / Weft: 100 N

Fastness to Rubbing

Dry: UNE-EN ISO 105-X12:2003 4/5

Wet: UNE-EN ISO 105-X12:2003 4/5

Coulour fastness to light UNE-EN ISO 105-
B02:2001 +A1:2002 Method 2 5/6 (grade
1-8; 8 best value) Suitable for outdoor

Pilling resistance UNE-EN 14465:2004
+A1:2007, UNE-EN ISO 12945-2:2001 4/5

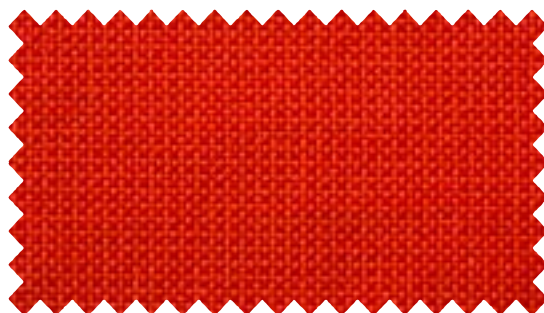
Inflammability: UK: BS 5825:2006
(cigarette)

UE: in 1021-1:2006 (cigarette)

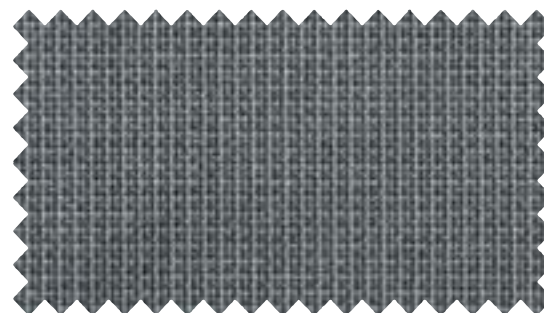
D: DIN 66084:2003-07 classification P- c

USA: CAL TB 117:2000 Section E, part 1
(C.S. 191-53; CLASS 1) NFPA 260:2009
Cover fabric CLASS 1

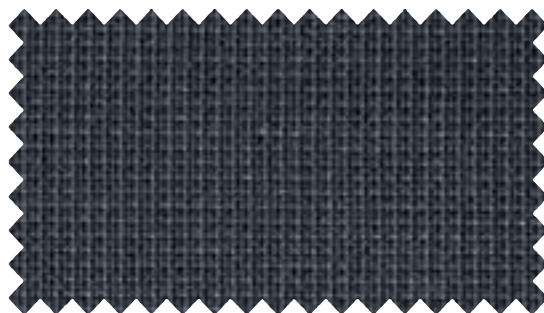
Buses: UNECE Regulation No. 118 Annex
6 (Directive 95/28 Annex IV) Flammability
performance is dependent on foam used.



D9



D10



D11



D12



Cigarette test



Don't use
bleach



Wash in dry



Antibacterial



Ecologic



Antistatic



Reciclable
100%



Suitable for
outdoor



Upholstered Group 01 Touch Leather



R1



R2



R3



R4



R5



R6



R7



R8

Tech data sheet

Composition 85 % Polyurethane (PU) – 15 % Cotton

Width 140 cm/ 54 in

Weight 570 g/m²

Thickness 1,00 - 1,10 mm

Resistance to Abrasion: 50.000 (Martindale cycles) ISO 1247-2:1998

Breaking strenght Warp: 3,18 kg. / Weft: 3,64 kg.

Tensile strenght Warp: 3,18 kg. / Weft: 3,64 kg.

Inflammability:

UK: BS 5825:2006 (cigarette)

UE: in 1021-1:2006 (cigarette)

D: DIN 66084:2003-07 classification P- c

USA: CAL TB 117:2000 Section E, part 1 (C.S. 191-53; CLASS 1)

NFPA 260:2009 Cover fabric CLASS 1

Buses: UNECE Regulation No. 118 Annex 6

(Directive 95/28 Annex IV) Flammability performance is dependent on foam used.



Don't use
bleach



Wash in dry



Wash with
wet cloth



Avoid drying
in the sun



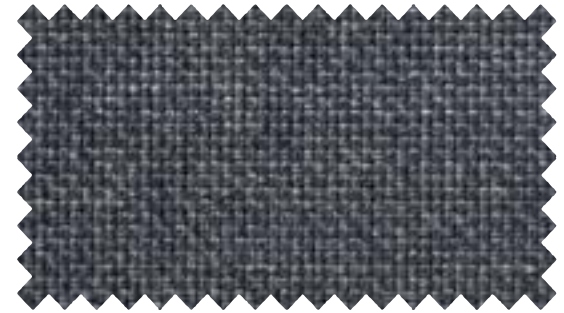
Cigarette test



Upholstered Group 01 Combi



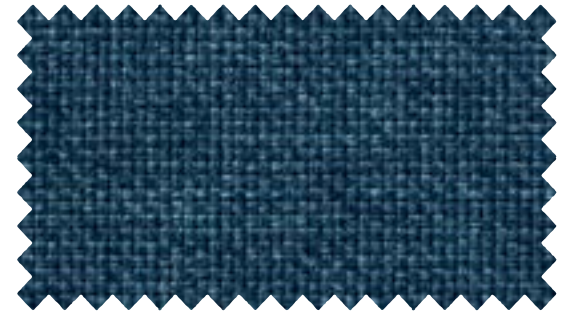
B1



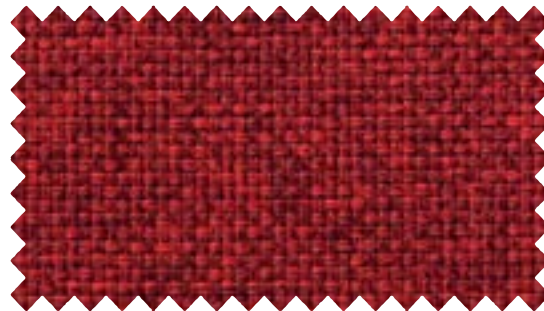
B2



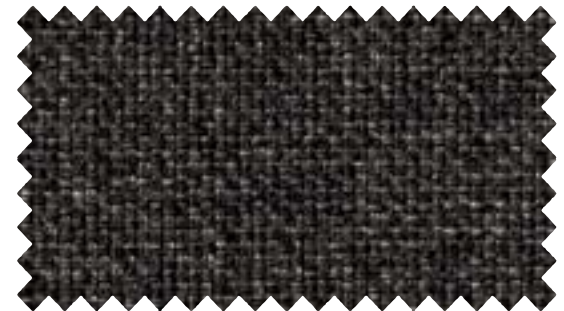
B3



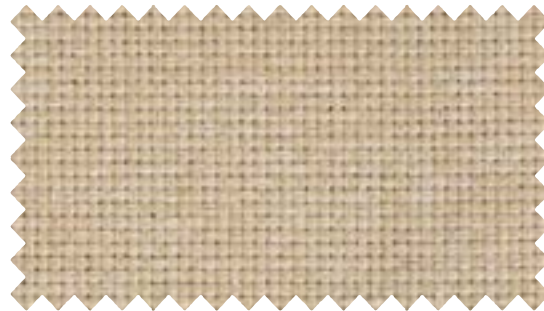
B4



B5



B6



B7



B8

Tech data sheet

Composition 100% Polyolefin
 Width 140 cm/ 54 in \pm 2%
 Resistance to abrasion UNE-EN 14465:2004+A1:2007 Annex A to based on UNE-EN ISO 12947-2:1999/AC:2006 + 40.000 (Martindale cycles)
 Breaking strenght UNE-EN ISO 13937-3:2001 Warp: 400 N / Weft: 260 N
 Fastness to Rubbing
 Dry: UNE-EN ISO 105-X12:2003 4/5
 Wet: UNE-EN ISO 105-X12:2003 4/5
 Coulour fastness to light UNE-EN ISO 105-B02:2001 +A1:2002 Method 2 6/7 (grade 1-8; 8 best value) Suitable for outdoor
 Pilling resistance
 UNE-EN 14465:2004 +A1:2007, UNE-EN ISO 12945-2:2001 4/5
 Inflammability:
 UK: BS 5825:2006 (cigarette)
 UE: in 1021-1:2006 (cigarette)
 D: DIN 66084:2003-07 classification P- c
 USA: CAL TB 117:2000 Section E, part 1 (C.S. 191-53; CLASS 1)
 NFPA 260:2009 Cover fabric CLASS 1
 Buses: UNECE Regulation No. 118 Annex 6 (Directive 95/28 Annex IV) Flammability performance is dependent on foam used.



Cigarette test

Don't use
bleach

Wash in dry



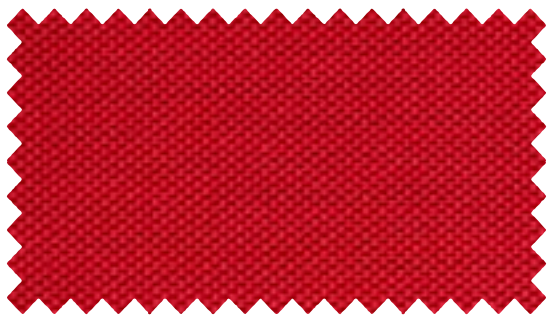
Antibacterial



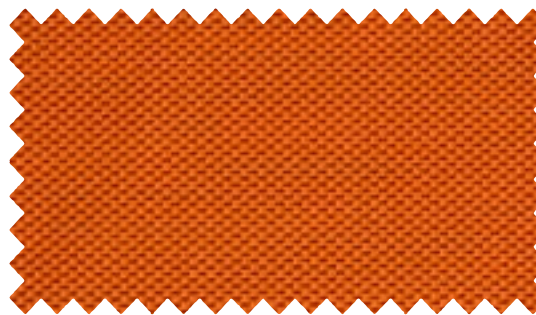
Ecologic

Recyclable
100%

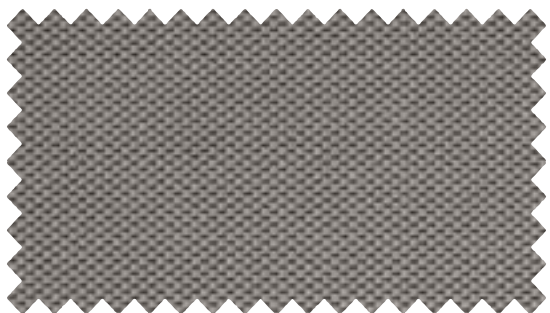
Upholstered Group 02 Ocean



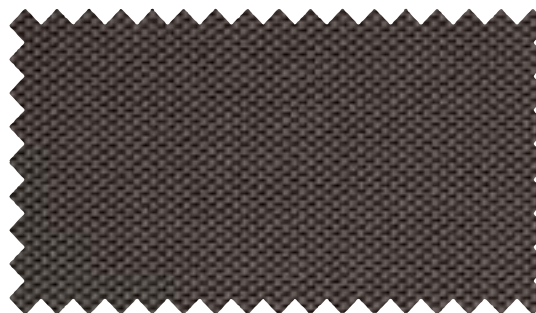
G2



G3



G4



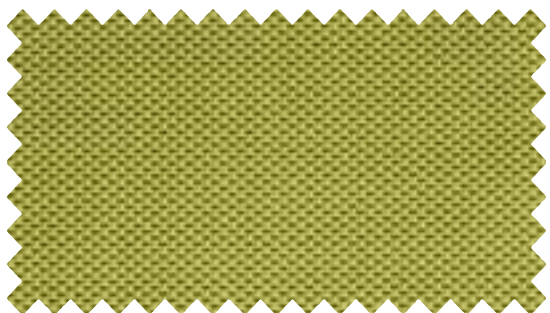
G5



G7



G8



G10



G12

Tech data sheet

Composition 100% Polyester F.R.

Width 160 cm / $\pm 2\%$

Resistance to abrasion UNE-EN 14465:2004+A1:2007 annex A based on UNE-EN ISO 12947-2:

1999/AC:2006 + 100.000 (Martindale cycles)

Breaking strenght UNE-EN ISO 13937-3:2001
Warp: 68 N / Weft: 73 N

Fastness to Rubbing

Dry: UNE-EN ISO 105-X12:2003 4/5

Wet: UNE-EN ISO 105-X12:2003 4/5

Coulour fastness to light UNE-EN ISO 105-B02:2001 +A1:2002 Method 2 4/5 (grade 1-8; 8 best value)

Pilling resistance

UNE-EN 14465:2004 +A1:2007,

UNE-EN ISO 12945-2:2001 4/5

Inflammability:

UK: BS 5852:2006 (cigarette and match); BS 5852:2006 Crib 5; BS 7176:2007 Medium Hazard; UE: in 1021-1:2006 (cigarette); in 1021-2:2006 (match); D: DIN 4102-1:1998 class. B2; DIN 66084:2003 classification P-a; F: NF P 92-507:2004 classification M.1 NF 60-013:2006 (AM 18); ES: UNE 23727-90 1R Classe M.1 ; I: UNI 9175:2010 Classe 1.IM; USA: CAL TB 117:2000 Section E, part 1 (C.S. 191-53; CLASS 1); NFPA 260:2009 Cover fabric CLASS 1; Buses: UNECE Reg. No 118 App. 6; Marine: IMO MSC.307 (88) Annex I Part 8; Aeronautical: FAR 25.853 a) App. F Part I Paragraph (a) (1) (ii) Flammability performance depends on foam used.



Don't use
bleach



Wash in dry



Avoid drying
in the sun



Cigarette test



Match test



Upholstered Group 02 Elastika FR



I2



I3



I4



I7



I10



I11



I12



I14

Tech data sheet

Composition 100% Polyester F.R.

Width 140 cm/ 54 in \pm 2%

Resistance to abrasion UNE-EN 14465:2004+A1:2007 Annex A to based on UNE-EN ISO 12947-2:1999/AC:2006 + 100.000 (Martindale cycles)

Breaking strenght UNE-EN ISO 13937-3:2001
Warp: 81 N / Weft: 66 N

Fastness to Rubbing

Dry: UNE-EN ISO 105-X12:2003 4

Wet: UNE-EN ISO 105-X12:2003 4

Coulour fastness to light UNE-EN ISO 105-B02:2001 +A1:2002 Method 2 5/6 (grade 1-8; 8 best value)

Pilling resistance

UNE-EN 14465:2004 +A1:2007,

UNE-EN ISO 12945-2:2001 4/5

Inflammability:

UK: BS 5852:2006 (cigarette and match); BS 5852:2006 Crib 5; BS 7176:2007 Medium Hazard; UE: in 1021-1:2006 (cigarette); in 1021-2:2006 (match); D: DIN 4102-1:1998 classification B2 DIN 66084:2003 classification P-a; F: NF P 92-507:2004 classification M.1; NF 60-013:2006 (AM 18); ES: UNE 23727-90 1R Classe M.1 ; I: UNI 9175:2010 Clase 1.IM; USA: CAL TB 117:2000 Section E,part 1 (C.S. 191-53; CLASS 1); NFPA 260:2009 Cover fabric CLASS 1;; Buses: UNECE Regulation No 118 Appendix 6; Marine: IMO MSC.307 (88) Annex I Part 8 Aeronautical: FAR 25.853 a) Appendice F Part I Paragraph (a) (1) (ii). Flammability performance is depends on foam used.



Don't use
bleach



Wash in dry



Avoid drying
in the sun



Cigarette test



Match test

Upholstered Group 02 Oruga



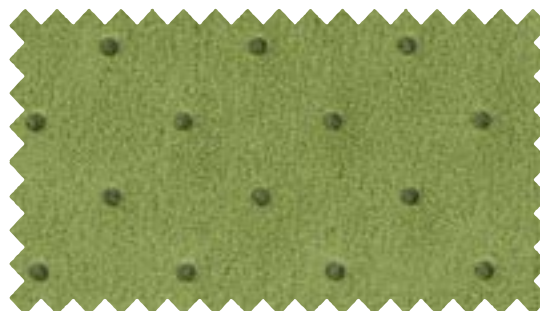
02



04



07



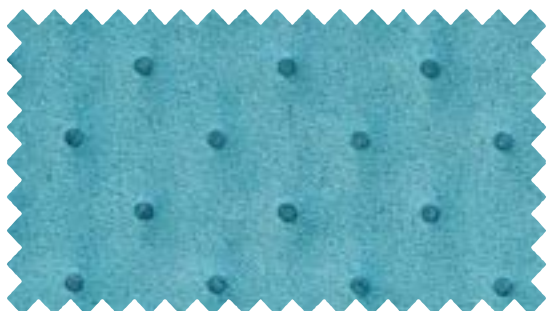
09



010



011



012



015

Tech data sheet

Composition 100% polyester
 Width 150 cm
 Seam strength
 Warp: 1.8 mm / BS 3320:1988
 Weft: 2 mm / BS 2543:1995
 Resistance to abrasion: +70.000
 (Martindale cycles)
 Breaking strenght
 Warp: 64 N / ISO13937-3:2000
 Weft: 64 N / ISO13937-3:2000
 Breaking strenght
 Warp: 140,36 N / in ISO 13937-3
 Weft: 92,62 N / in ISO 13937-3
 Coulour fastness to light 4 / ISO 105
 B02:1994
 Rubbing Solvents 4-5 / ISO 105X12:2001
 Rubbing fastness in humid state 4 / ISO
 105X12:2001
 Pilling resistance 4-5 / ISO 12945-2



Don't use
bleach



Wash in dry



Avoid drying
in the sun



Anti-stain
finish



Upholstered Group 02 Nilo



NL1



NL7



NL9



NL12



NL15



NL33



NL39



NL43

Tech data sheet

Composition

Surface: 100% polyurethan

Base: 70% polyester / 30 % cotton

Width 140 cm/ 54 in +/- 2cm

Resistance to abrasion: +100.000
(Martindale cycles)

Breaking strenght

Warp: 7254,6 N / A in ISO 13937-3

Weft: 46,7 N / A in ISO 13937-3

Breaking strenght

Warp: 54,6 N / A in ISO 13937-3

Weft: 92,62 N / A in ISO 13937-3

Coulour fastness to light > 5 / A in ISO 105-B 02

Rubbing Solvents 5: A in ISO 105-X12

Rubbing fastness in humid state 5: A in ISO 105-X12

Pilling resistance ISO/DIS 12945-2

Treatment Azo Undetectable

Anti hydrolisis jungle test 3 years

Inflammability:

EN 1021-1 & 2

Will also pass other flammability standards. Flame retardant performance is dependent upon the foam used.



Don't use
bleach



Wash in dry



Avoid drying
in the sun



Ecologic



Anti hidrolisis



Antiallergic



Without chemical
products



Cigarette test

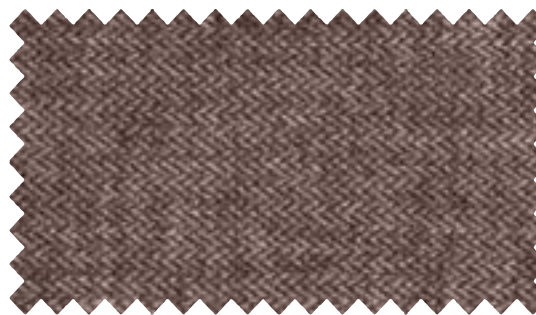


Match test

Upholstered Group 02 Madison



MA1



MA3



MA4



MA6



MA12



MA17



MA19



MA20

Tech data sheet

Composition 80 % pes. / 20 % cot.

Width 140 cm/ 54 in

Seam strenght

Warp: 1.8 mm / BS 3320:1988

Weft: 2 mm / BS 2543:1995

Resistance to abrasion: + 30.000
(Martindale cycles)

Breaking strenght

Warp: 729,0 n/18,1% Cat. A in ISO 13934-1

Weft: 687,0 n/29,9% Cat. A in ISO 13934-1

Breaking strenght

Warp: 140,36 N / in ISO 13937-3

Weft: 92,62 N / in ISO 13937-3

Coulour fastness to light > 5 / UNE
40187 / BS 1006-B02

Rubbing Solvents 5: ISO 105-D01 / UNE
40099

Rubbing fastness in humid state 5: ISO
105-C06 / UNE 40029

Pilling resistance ISO/DIS 12945-2

 Don't use
bleach

 Wash with
wet cloth

 Avoid drying
in the sun



Upholstered Group 03 Valencia



VA5



VA6



VA11



VA14

Tech data sheet

Composition 100% polyester
 Width 137 cm - ISO 2286-1
 Resistance to abrasion + 300.000
 (Martindale cycles) ISO 12947-2
 Breaking strenght
 ISO 4674-1 MB NEWTON (MIN.)
 Warp: 29 N / Weft: 25 N
 Fastness to Rubbing
 Dry: UNE-EN ISO 105-X12:2003 4/5
 Wet: UNE-EN ISO 105-X12:2003 5
 Coulour fastness to light DIN 54004 / NTC
 1479 Blue wool Cal≥7 1,000 Hours
 Tension Resistance
 ISO 1421 M1 NEWTON / MIN
 Warp: 405 N / Weft: 198 N
 Inflammability:
 Passed tests: FMVSS 302, IMO Res.
 MSC.307 (88) – (2010 FTP Code) Annex 1
 Part 8; FAR 25.853 (A) Appendix F Part. I (a)
 (1) (ii); UNE 23.727 90: M2; in 1021 PARTE 1
 & 2; DIN 4102 (B2); ÖNORM B 3825; ÖNORM
 B 3800 Teil 1; CALIFORNIA T.B. 117-2013;
 UFAC Fabric - Class I; NFP 92.503: M2; in
 71-2; UNI 9175: 1.IM;ECE R118



VA15



VA16



VA21



VA 22



Don't use
bleach



Wash in dry



Avoid drying
in the sun



Antistatic



Waterproof



Antiallergic



Without che-
mical products



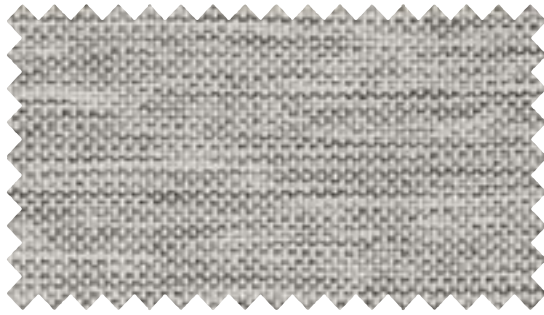
Cigarette test



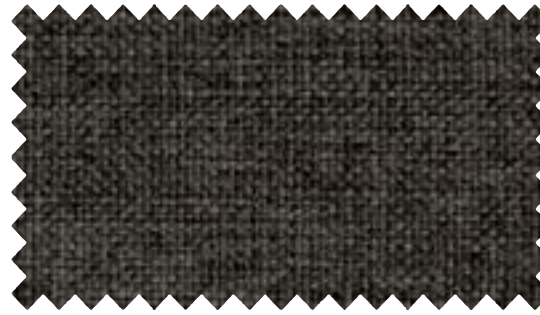
Match test



Upholstered Group 03 Dekora



DE1



DE2



DE3



DE4



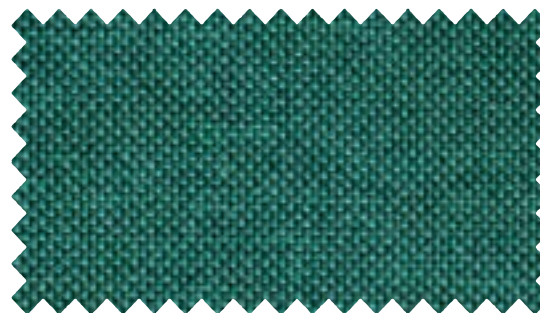
DE5



DE6



DE7



DE8

Tech data sheet

Composition 100% Polyolefin

Width 140 cm/ 54 in \pm 2%

Resistance to Abrasion UNE-EN 14465:2004+A1:2007

Annex A to based on UNE-EN ISO 12947-2:1999/
AC:2006 + 40.000 (Martindale cycles)

Breaking strenght

UNE-EN ISO 13937-3:2001

Warp: 120 N / Weft: 130 N

Fastness to Rubbing

Dry: UNE-EN ISO 105-X12:2003 4/5

Wet: UNE-EN ISO 105-X12:2003 4/5

Colour fastness to light UNE-EN ISO 105-B02:2001
+A1:2002 Method 2 5/6 (grade 1-8; 8 best value)

Suitable for outdoor

Pilling resistance

UNE-EN 14465:2004 +A1:2007,

UNE-EN ISO 12945-2:2001 4/5

Inflammability:

UK: BS 5825:2006 (cigarette)

UE: in 1021-1:2006 (cigarette)

D: DIN 66084:2003-07 classification P- c

USA: CAL TB 117:2000 Section E, part 1 (C.S. 191-53;
CLASS 1) NFPA 260:2009 Cover fabric CLASS 1; Buses:
UNECE Regulation No. 118 Annex 6 (Directive 95/28
Annex IV) Flammability performance is dependent on
foam used.



Upholstered Atika & Custom



B01

Tech data sheet

Composition 64% polyester – 36% pur

Width 140 cm/ 54 in \pm 2%

Resistance to Abrasion + 80.000
(Martindale cycles) ISO 12947-2

Breaking strenght UNE-EN ISO 13937-3:2001

Warp: 400 N / Weft: 260 N

Fastness to Rubbing

Dry: UNE-EN ISO 105-X12:2003 4/5

Wet: UNE-EN ISO 105-X12:2003 4/5

Coulour fastness to light Value: 6
(Tolerance 5 to 8; 8 best value) ISO 105-B02
(Xenotest)

Pilling resistance UNE-EN ISO 12945-2:2001
4/5

Inflammability:

EN 1021-1 & 2 Will also pass other
flammability standards. Flame retardant
performance is dependent upon the foam
used.



B02



B03



B04



B05



Don't use
bleach



Wash in dry



Avoid drying
in the sun



Cigarette test



Match test

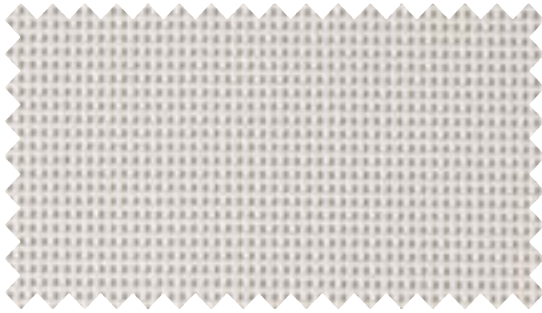


pdf

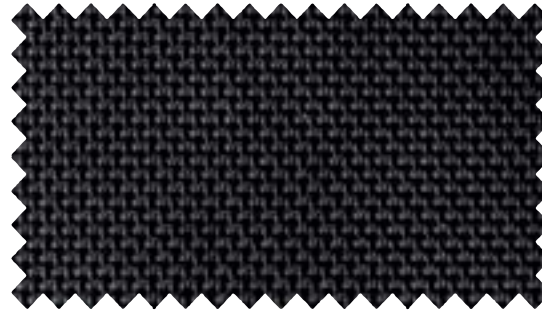


Meshes

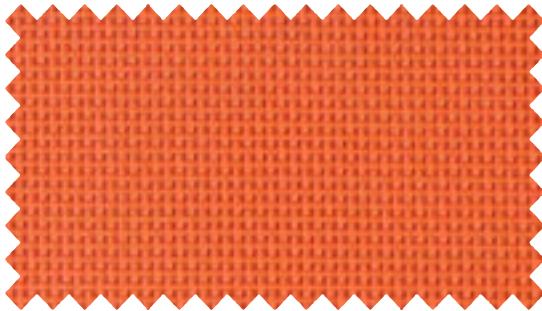
Atika & Splash



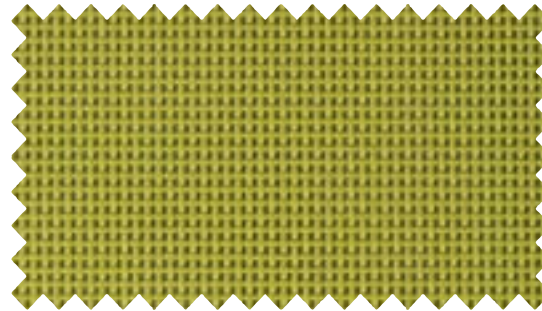
01



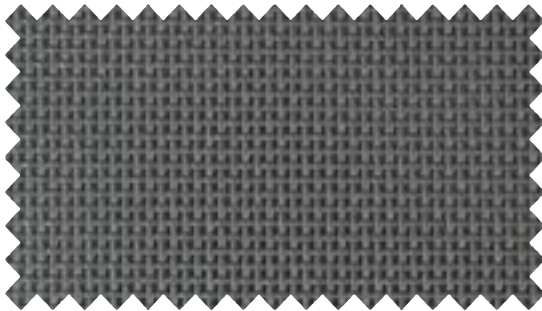
02



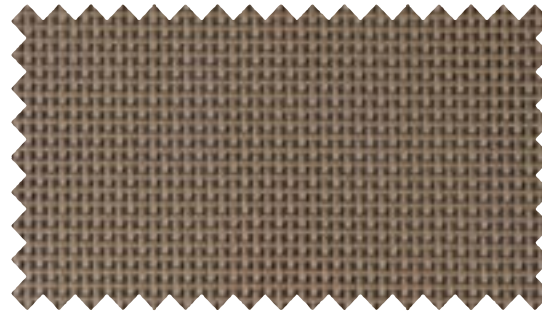
06



20



22



26

Tech data sheet

Fabric components

PVC: 75 %

PES: 25 %

Composition

Warp yarn: 4.700 dtex

Weft yarn: 4.700 dtex

Width Min 140 cm - Max 235 cm

Weight 560 gr/m² UNI 9213/3

Thickness 1 mm

Resistance to Abrasion in ISO 12947-2:1998 + 100.000 (Martindale cycles)

Breaking strenght UNI in ISO 1421 Weft: 230 Kg/5cm / Warp: 275Kg/5cm

Fastness to Rubbing in ISO 105-x12:2003 col. 4165, 1101, 2102, 4154, 4104, 1195 5 - val. Max

CouLOUR fastness to light in ISO 4892-2/06 col. 0152, 5154, 1140, 0600, 4202, 0108, 4104, 1100, 2116 8 - val. Max

Fatigue strenght UNE-EN ISO 13934 EN1728:2000 - EN

Level 3° hard > 200.000 cycles / 1.000 N

 Don't use
bleach

 Wash in dry

 Avoid drying
in the sun





www.dileoffice.com

DILEOFFICE Showroom Madrid: C/ Marcelina, 6 28029 (Madrid)
DILEOFFICE S.L. Pol. Ind. II, Avda. de Valencia S/N, 03420 Castalla (Alicante) SPAIN

Tel. +34 965 561 177 | Fax. +34 965 560 672 | info@dileoffice.com